



MOT601 Series CD Ignition System For Single Cylinder Applications

The self-powered MOT601 is a Capacitor Discharge (CD) Ignition System for use on spark-ignited, single cylinder engines with large flywheels. Engine mounted, very close to the flywheel, the electronic components are supplied with power by magnetic charging circuitry.

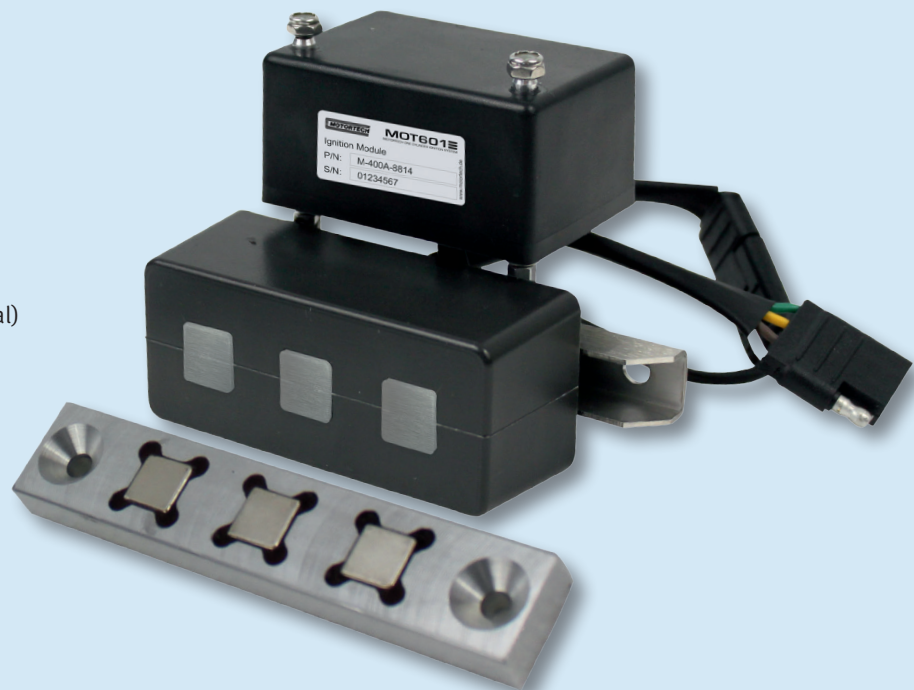
MOT601 
MOTORTECH ONE CYLINDER IGNITION SYSTEM

Features

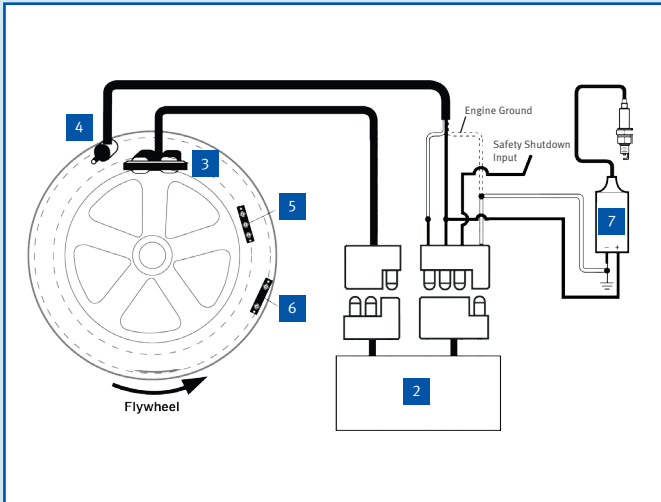
- Applicable for single cylinder applications with different flywheel sizes
- Self-powered electromagnetic system, no need for external power
- High primary energy
- Using crankshaft reference timing
- High accuracy ignition timing
- 2 separate ignition timings (startup and nominal)
- Safety shutdown input
- Supplies panel power

Benefits

- Price effective system and parts
- Mainly maintenance-free system due to non-moving parts that wear out
- All components available as spare parts and interchangeable with competitor products
- 1 year warranty



Try the alternative.
Call the nearest MOTORTECH sales partner for more information.



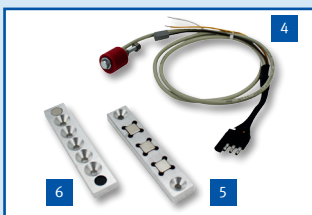
Mode of Operation

The charging bar **5** with three strong magnets attached to the flywheel passes the charging generator module **3** that is attached to the engine in a fixed position at every revolution of the flywheel. At every revolution the generator module charges a capacitor in the electronic ignition module **2** as a result of the magnetic field.

The trigger bar **6** with two magnets, which is likewise attached to the flywheel, passes a pickup coil **4** that is attached to the engine in a fixed position at every revolution of the engine. When the trigger bar passes the pickup coil, the energy stored in the capacitor is discharged into the attached ignition coil **7**.

Ordering Information

P/N	Figure	Description	Equivalent to
MOT601	1	MOT601 ignition system	AEI® FM601 ARROW® SFI-KIT MURPHY® 72-70-0125



Ordering Information – Subcomponents

P/N	Figure	Description	Equivalent to
M-400A-8814	2	Electronic ignition module	AEI® 400A-8814 ARROW® A400A-8814 MURPHY® 72-00-0024
M-260D-8810	3	Charging generator	AEI® 260D-8810 ARROW® A260D-8810 MURPHY® 72-00-0025
M-270A-8817	4	Magnetic pickup harness	AEI® 270A-8817 ARROW® A400A-8817 MURPHY® 72-00-0026
M-400A-8813	5	Magnetic charging bar	AEI® 400A-8813 ARROW® A400A-8813 MURPHY® 72-00-0027
M-400A-8811	6	Magnetic trigger bar	AEI® 400A-8811 ARROW® A400A-8811 MURPHY® 72-00-0028
06.50.055	7	Ignition coil	AEI® 1187 ARROW® 330-2-AI-46 MURPHY® 72-70-0235

Distributed by:

Copyright

The copyright for all materials used in this MOTORTECH publication is reserved. Any kind of duplication or use of objects such as pictures or texts in other electronic or printed publications without approval by MOTORTECH is not permitted.

Trademark Information

MOTORTECH products and the MOTORTECH logo are registered and/or common law trademarks of MOTORTECH Holding GmbH. All OEM names and part numbers shown are for reference purposes only. All trademarks, logos and symbols used or shown in this MOTORTECH publication are exclusive objects to the right of their owners and are used for reference purposes only.