

VariStep

MOTORTECH Stepper Motor Card

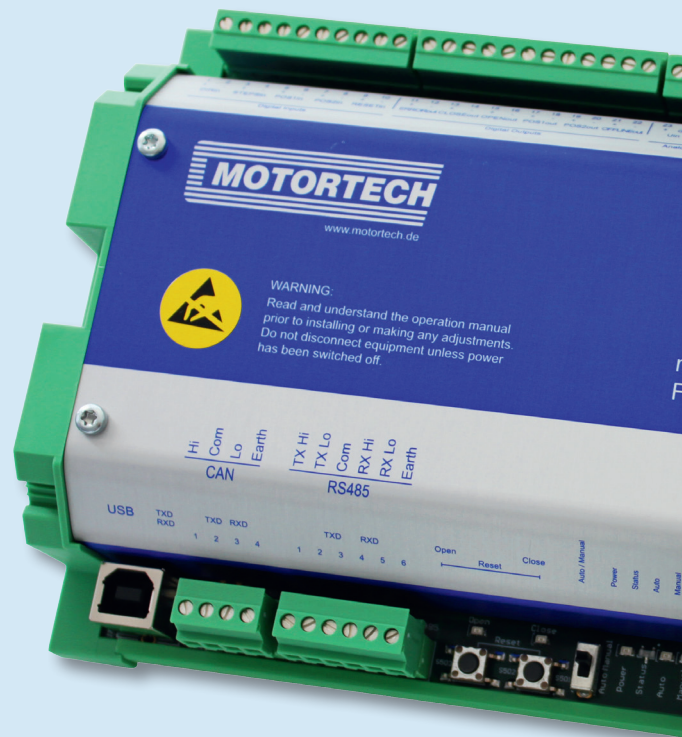


VariStep 
MOTORTECH STEPPER MOTOR CARD

VariStep – flexible, precise,

The stepper motor card manufactured by MOTORTECH guarantees the ideal control of the various types of MOTORTECH VariFuel2 Air/Fuel mixers and integrated throttle bodies.

- Precise mixer and throttle adjustment due to microstep operation
- Error data logging
- LEDs displaying unit status and activity
- Combination of several units without signal amplifier/splitter
- Integrated CANopen interface (as of Firmware 1.6)
- Configuration via MICT software (comes with controller)
- Plug-in terminals
- Easy access to connectors and switches
- Switch board installation on DIN rail



Technical Data

- 18 – 32 VDC power supply
- -15 °C up to +55 °C (5 °F up to 131 °F) ambient temperature
- 0-20 mA/ 0-10 V analog input and output, flexible configuration
- 5 digital inputs, 5 to 32 V compatible, DC-isolated
- 6 digital outputs, up to 32 V, 500 mA, DC-isolated

Interfaces

- CAN Bus 2.0b interface (as of Firmware 1.6)
- USB 1.1 interface

Configuration

- Using the graphic user interface MICT (MOTORTECH Integrated Configuration Tool)
- Manual control via push-button

Housing

- Protection class IP 20
- Dimensions 217 x 128 x 50 mm

reliable



VariFuel2

MOTORTECH AIR/FUEL RATIO MIXER

The VariFuel2 is a high tech variable venturi type mixer that can constantly adjust to any fuel changes and allows the engine to operate at its most efficient point. The series 100, 140, 200 and 250 are available for a wide range of engines. Coupled to a lambda controller (lean burn or stoichiometric) it will regulate the mixture precisely. Very popular in biogas applications where the fuel quality constantly changes.

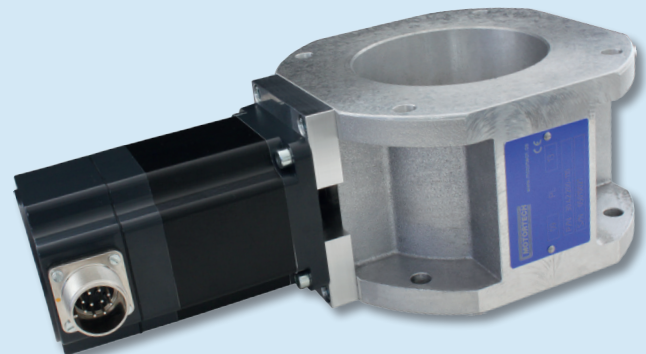


ITB

MOTORTECH INTEGRATED THROTTLE BODY

Throttles with Integrated Stepper Motor

Based on its proven standard throttles, MOTORTECH has developed throttles with an integrated stepper motor. They adjust the air/fuel mixture with high precision and thereby control engine speed and power precisely and reliably. It is also common to use these throttles as gas valves for air/fuel ratio control.



MICT – MOTORTECH Integrated Configuration Tool

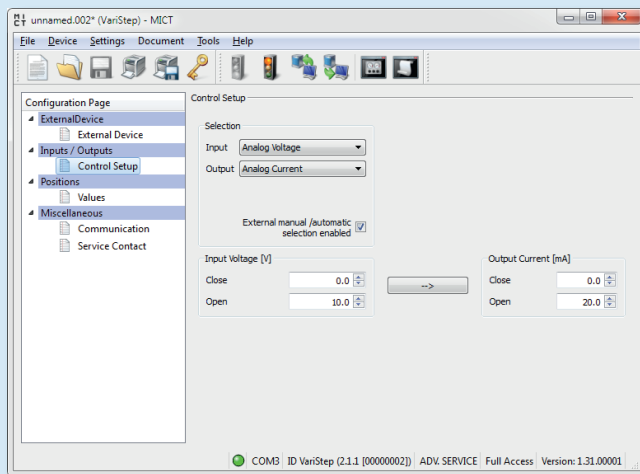
The MICT is the graphical user interface for the VariStep stepper motor card. All functions of the VariStep are user programmable and can be displayed individually.

- Language selectable (DE/EN/CN)
- Microsoft Windows XP / Vista / 7 compatible
- Programmable for different VariFuel2 models, ITB throttle series and throttle gears
- Configuration of inputs and outputs
- Preadjustment of two fixed mixer positions
- Display of debit and actual value as well as operation status

MICT

MOTORTECH INTEGRATED CONFIGURATION TOOL

- Permanent data acquisition
- Configuration of CAN Bus interface for ALL-IN-ONE signals
- Print function of a given moment in the operation can be used for external problem analysis, etc.
- Context sensitive online help
- Different access levels to avoid accidental misconfigurations



Ordering Information

P/N	Description	Delivery Volume
31.01.955	VariStep stepper motor card	Stepper motor card USB interface wire MICT software User manual

Distributed by:

Copyright

Copyright is reserved for all materials used in MOTORTECH publications. Any reproduction or use of objects, such as images or text modules, in other electronic or printed publications is only permitted with the permission of MOTORTECH.

Trademark notice

MOTORTECH products and the MOTORTECH logo are registered and/or common law trademarks of MOTORTECH Holding GmbH.

All OEM names and part numbers are only indicated for reference purposes. All rights to trademarks, logos and symbols used or illustrated in MOTORTECH publications remain reserved for the respective owner and are only used for reference purposes.